

# HMI Monitor for Cleanroom

---



**BLUE LINE**  
IT for Demanding Environments

- has more than 30 years experience
- delivers reliable IT solutions for demanding environments
- builds compact and high performance solutions
- focuses on long duration, 24/7-operation, and ruggedness
- is ISO 9001:2015-certified
- is known for providing the best assistance and services in all phases.

# HMI Monitor for Cleanroom

---

## Highlights

Slim, elegant stainless steel HMI for cleanroom. Very easy to clean and disinfect due to smooth sides, rounded edges and a flat, smooth front. Withstands all known cleaning agents and disinfectants.

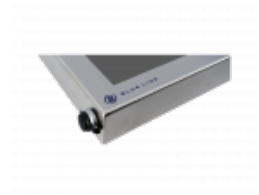
Cutting-edge touch technology works with gloves improving workflow and productivity. A typical use case would be three layers of gloves, one layer of cotton gloves and two layers of nitrile/latex or silicone gloves. It is also possible to combine with thicker safety gloves. The multi touch display provides auto calibration for seamless operation.

Blue Line's HMIs are designed for 24/7 operation, with a low power consumption, passive cooling and without moving parts for maximum operational reliability.

Available as monitor or with integrated PC, thin client or KVM. Mounting is possible on walls, machines, control cabinets as well as with a large range of supporting arms. Blue Line's modular design makes it possible to configure fully to specific requirements to functionality, finish and environment.

Blue Line's modular design makes it possible to configure to specific needs in functionality, finish and environment. Get free advice from our experts and let us set up a Teams meeting for an online demo and Q&A. Benefit from our experience and knowledge based on numerous installations in biotech and pharmaceutical sites around the world.

- Life Science / GMP / FDA environment
- Stainless steel AISI 304 or 316L
- Easy to clean & disinfect
- Withstands all known detergents: iso-propyl alcohol, non-deionized water, VHP, Spor-Klenz™, Klercide, Actisan, LpH®, Vesphene® and more
- Meets all cleanroom, GMP and FDA requirements
- 21.5" and 24" PCAP multi touch display
- Operable with up to 3 layers of cleanroom gloves
- IP65 dust and waterproof
- Monitor
- Full HD resolution 1920 x 1080
- Option for KVM extender
- Fanless operation
- Optional Nymi ready - integrated reader
- Wide range of options: USB, COM and reset
- Flexible mounting for wall, desktop, supporting arms etc
- Long product life cycle
- Customisation according to your requirements



**BLUE LINE**  
IT for Demanding Environments

- has more than 30 years experience
- delivers reliable IT solutions for demanding environments
- builds compact and high performance solutions
- focuses on long duration, 24/7-operation, and ruggedness
- is ISO 9001:2015-certified
- is known for providing the best assistance and services in all phases.

# HMI Monitor for Cleanroom

## Specifications

### Model Type

HMI stainless steel Monitor

### Construction

Fully sealed enclosure in stainless steel AISI 304  
Optional acid resistant stainless steel AISI 316L

### Cooling

Fanless

### Ingress Protection

IP65

### Environment

Operating temperature 0°C to +50°C

### Certification

CE / FCC CLASS A

### Display

21.5"	1920 x 1080, 16:9, FHD	LCD
24"	1920 x 1080, 16:9, FHD	LCD

### Touch

Projected capacitive multi touch (supports gloves)

### Brightness

300 nits

### Viewing Angle

178/178

### Front Input / Output

Options for: USB 2.0 ports  
COM ports  
Reset  
All connectors come with waterproof cap  
Nymi ready - integrated reader

### Rear Input / Output

1 x HDMI / optional 1 x VGA  
1 to 4 x USB 2.0 ports  
COM ports optional  
1 x Power input  
All connectors come with waterproof cap

### Power Supply

+90V to +264V AC-input  
Option for +10V to +36V DC-input

### Power Consumption

Max 40W

### Mounting

VESA 100  
Stainless steel supporting arm  
Stainless steel tube mount  
Stainless steel desktop stand  
Other options available according to requirements

### Dimension and Weight

21.5"	H 358 x W 567 x D 50mm	12.3kg
24"	H 406 x W 639 x D 52mm	

### Accessories Optional

Stainless steel scanner bracket  
Antibacterial mouse  
Antibacterial keyboard  
Combine with Mobile Operator Station  
Other options available according to requirements

### Warranty and After Sales Support

Standard 1 year (option for 3 years)

### Ordering Information

1565



**BLUE LINE**  
IT for Demanding Environments

Blue Line A/S | Kappa 8 | 8382 Hinnerup, Denmark  
T +45 8678 5000 | [www.blue-line.com](http://www.blue-line.com)