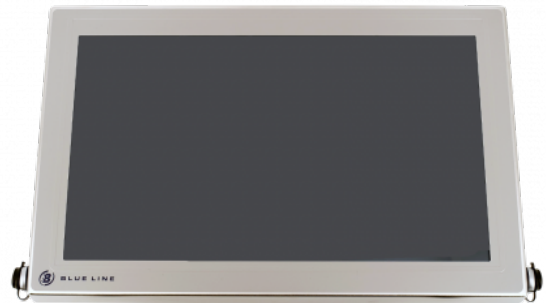


HMI Panel PC for Cleanroom



BLUE LINE
IT for Demanding Environments

- has more than 30 years experience
- delivers reliable IT solutions for demanding environments
- builds compact and high performance solutions
- focuses on long duration, 24/7-operation, and ruggedness
- is ISO 9001:2015-certified
- is known for providing the best assistance and services in all phases.

HMI Panel PC for Cleanroom

Highlights

Slim, elegant stainless steel HMI for cleanroom. Very easy to clean and disinfect due to smooth sides, rounded edges and a flat, smooth front. Withstands all known cleaning agents and disinfectants.

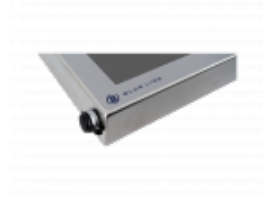
Cutting-edge touch technology works with gloves improving workflow and productivity. A typical use case would be three layers of gloves, one layer of cotton gloves and two layers of nitrile/latex or silicone gloves. It is also possible to combine with thicker safety gloves. The multi touch display provides auto calibration for seamless operation.

Blue Line's HMIs are designed for 24/7 operation, with a low power consumption, passive cooling and without moving parts for maximum operational reliability.

Available as monitor or with integrated PC, thin client or KVM. Mounting is possible on walls, machines, control cabinets as well as with a large range of supporting arms. Blue Line's modular design makes it possible to configure fully to specific requirements to functionality, finish and environment.

Blue Line's modular design makes it possible to configure to specific needs in functionality, finish and environment. Get free advice from our experts and let us set up a Teams meeting for an online demo and Q&A. Benefit from our experience and knowledge based on numerous installations in biotech and pharmaceutical sites around the world.

- Life Science / GMP / FDA environment
- Stainless steel AISI 304 or 316L
- Easy to clean & disinfect
- Withstands all known detergents: iso-propyl alcohol, non-deionized water, VHP, Spor-Klenz™, Klercide, Actisan, LpH®, Vesphene® and more
- Meets all cleanroom, GMP and FDA requirements
- 21.5" and 24" PCAP multi touch display
- Operable with up to 3 layers of cleanroom gloves
- Full HD resolution 1920 x 1080
- IP65 dust and waterproof
- Integrated PC / client
- Fanless operation
- Optional Nymi ready - integrated reader
- ThinManager support
- Windows 7 / 8 / 10 / 11
- Wide range of options: USB, LAN, serial, reset
- Flexible mounting VESA / wall / pipe / swivel arm / gas arm
- Long product life cycle
- Customisation according to your requirements



BLUE LINE
IT for Demanding Environments

- has more than 30 years experience
- delivers reliable IT solutions for demanding environments
- builds compact and high performance solutions
- focuses on long duration, 24/7-operation, and ruggedness
- is ISO 9001:2015-certified
- is known for providing the best assistance and services in all phases.

HMI Panel PC for Cleanroom

Specifications

Model Type

HMI stainless steel Panel PC

Construction

Fully sealed enclosure in stainless steel AISI 304
Optional acid resistant stainless steel AISI 316L

Cooling

Fanless

Ingress Protection

IP65

Environment

Operating temperature 0°C to +50°C
Storage temperature -30°C to +70°C
Humidity 10 to 90% @ 40°C, non-condensing

Certification

CE / FCC CLASS A

Display

21.5"	1920 x 1080, 16:9, FHD	LCD
24"	1920 x 1080, 16:9, FHD	LCD

Touch

Projected capacitive multi touch (supports gloves)

Brightness

300 nits

Viewing Angle

178/178

Processor

Intel Atom E3845 4C/4T, 1.9GHz
Intel Celeron J6412 4C/4T, 2.0GHz (Turbo 2.6GHz)
Intel Core i5-8365UE 4C/8T, 1.6GHz (Turbo 4.1GHz)

Chipset

Integrated SoC

RAM

Atom E3845	Onboard 4GB DDR3L 1600MHz (option for 8GB)
Celeron J6412	1 x DDR4 SO-DIMM socket, max 32GB 3200MHz
Core i5-8365UE	1 x DDR4 SO-DIMM socket, max 32GB 2400MHz

Storage

1 x 2.5" SSD / HDD

Front Input / Output

Option for: USB ports
COM ports
Reset
All connectors come with waterproof cap
Nymi ready - integrated reader

Rear Input / Output

1 x Gbe LAN (2 x LAN optional)
1 to 4 x USB ports
COM ports optional
1 x Power input
All connectors come with waterproof cap

Expansion

WIFI/Bluetooth (optional)

Operating System

Windows 10 / 11*
Windows 10 / 11* IoT Enterprise
Linux
*(Intel Atom E3845 CPU do not support Windows 11)



BLUE LINE
IT for Demanding Environments

Blue Line A/S | Kappa 8 | 8382 Hinnerup, Denmark
T +45 8678 5000 | www.blue-line.com

HMI Panel PC for Cleanroom

Thin Client

ThinManager, Microsoft Remote Desktop (RPD), NoTouch OS, VNC, Citrix and others

Power Supply

+90 to + 264V AC-input
Option +10V to +36V DC-input

Power Consumption

Max 40W

Mounting

VESA 100
Stainless steel supporting arm
Stainless steel tube mount
Stainless steel desktop stand
Other options available according to requirements

Dimension and Weight

21.5"	H 358 x W 567 x D 50mm	12.3kg
24"	H 406 x W 639 x D 52mm	

Accessories Optional

Stainless steel scanner bracket
Antibacterial mouse
Antibacterial keyboard
Combine with Mobile Operator Station
Other options available according to requirements

Warranty and After Sales Support

Standard 1 year (option for 3 years)

Ordering Information

1560



BLUE LINE
IT for Demanding Environments

Blue Line A/S | Kappa 8 | 8382 Hinnerup, Denmark
T +45 8678 5000 | www.blue-line.com